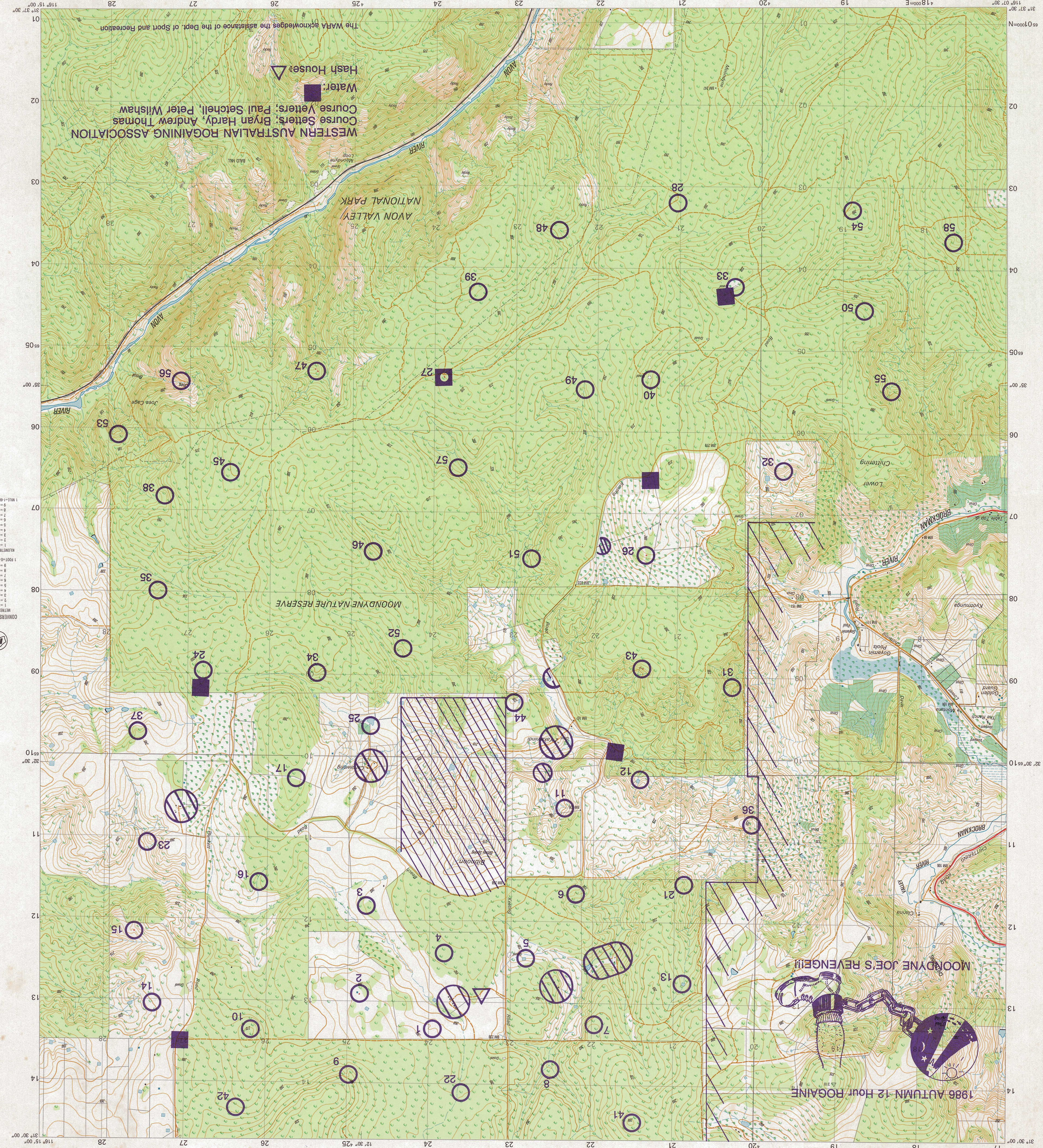


REFER TO THIS MAP AS SHEET 2134-IV NE (EDITION 1)
SERIES R 811



CONTOUR INTERVAL 5 METRES
VERTICAL DATUM: AUSTRALIAN HEIGHT DATUM
ELEVATIONS IN METRES

SCALE 1 : 25 000
3 Kilometres

TRANSVERSE MERCATOR PROJECTION DATUM 1966
HORIZONTAL DATUM: AUSTRALIAN GEODETIC DATUM 1966
GRID VALUES ARE SHOWN IN FULL ONLY AT THE SOUTH WEST CORNER OF THE MAP
CROWN COPYRIGHT RESERVED

UNIVERSAL GRID REFERENCE

GRID ZONE DESIGNATION	50 J
SQUARE IDENTIFICATION	ML
SAMPLE POINT	BM 22
GRID ZONE DESIGNATION	50 J
SQUARE IDENTIFICATION	ML
SAMPLE POINT	BM 22

UNIVERSAL GRID REFERENCE

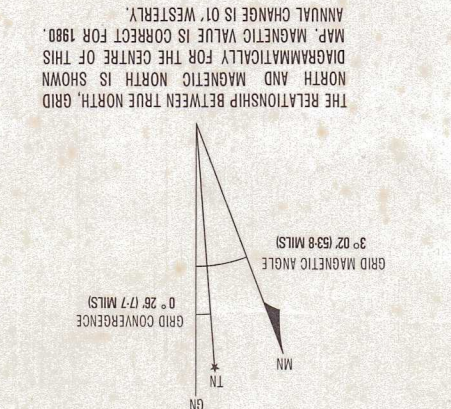
GRID ZONE DESIGNATION	50 J
SAMPLE POINT	BM 22
GRID ZONE DESIGNATION	50 J
SAMPLE POINT	BM 22

Light railway or tramway; Foot track	---
Battery single track; Light railway	—+—+—+—+—
Double track; Foot bridge; Single	—+—+—+—+—
Canal; Chain grid; Foot bridge	—+—+—+—+—
Bridge road; Causeway; Bridge railway	—+—+—+—+—
Vehicle track	—+—+—+—+—
Road unsealed surface one lane; Overpass	—+—+—+—+—
Road unsealed surface two lanes; Embankment	—+—+—+—+—
Road sealed surface one or more lanes; Clearing	—+—+—+—+—
Main city business street; Recreation reserve	—+—+—+—+—
Strip-up area; Municipal reserve	—+—+—+—+—
Telephone line; Power transmission line	—+—+—+—+—
Forest dense; medium; scattered	—+—+—+—+—
Spot elevation; Contour with value; Contour	—+—+—+—+—
Triangulation station; Bench mark	—+—+—+—+—
Post office; School; Hospital	—+—+—+—+—
Village; Building or shed; Church	—+—+—+—+—
Mine; Windmill; Quarry	—+—+—+—+—
Levee or bank	—+—+—+—+—
Channel or stream; Stream intermittent	—+—+—+—+—
Channel or stream; Stream perennial	—+—+—+—+—
Cliff or escarpment; Stream perennial	—+—+—+—+—
Cliff or escarpment; Stream intermittent	—+—+—+—+—
Cliff or escarpment; Stream intermittent	—+—+—+—+—
Cliff or escarpment; Stream intermittent	—+—+—+—+—

MAP RELIEF: 1: Topographic information on this map is correct to 1977.
The accuracy of the map is 6.25 metres in the horizontal position and 1.25 metres in elevation.
The map is based on the Australian Geodetic Datum 1966.
The map is based on the Australian Geodetic Datum 1966.
The map is based on the Australian Geodetic Datum 1966.
The map is based on the Australian Geodetic Datum 1966.

JUMPERKINE
SHEET 2134-IV NE
AUSTRALIA
STOCK NO. R811X2134ANE

THE RELATIONSHIP BETWEEN TRUE NORTH, GRID NORTH AND MAGNETIC NORTH IS SHOWN
MAGNETIC VALUE IS CORRECT FOR 1988
ANNUAL CHANGE IS WESTERLY



INDEX TO ADJOINING MAPS

2750 N SM	2750 E SM	2750 N SM	2750 E SM
2750 N SM	2750 E SM	2750 N SM	2750 E SM
2750 N SM	2750 E SM	2750 N SM	2750 E SM
2750 N SM	2750 E SM	2750 N SM	2750 E SM

CONVERSION TABLE

1 METRE = 3.2808 FEET
1 KILOMETRE = 0.621371 MILES
1 FOOT = 0.3048 METRES
1 MILE = 1.60934 KILOMETRES

<u>No</u>	<u>Points</u>	<u>Description</u>	<u>No</u>	<u>Points</u>	
I	10	30 metres @ 254 degrees from a dam	31	50	The spur
2	10	90 metres @ 300 degrees from the water tank	32	50	The rock
3	10	North side of the clearing	33	50	North-Ea
4	10	A fence corner	34	50	The spur
5	10	<u>South-West corner of the dam</u>	35	50	<u>The gull</u>
6	20	In the gully	36	60	A rock h
7	20	On the broad spur	37	60	The end
8	20	Between the creeks	38	60	South si
9	20	In the gully	39	60	West sid
<u>10</u>	<u>20</u>	<u>The knoll</u>	40	60	250 metr
II	30	A creek junction	41	70	The head
12	30	Foot of the dam wall	42	70	On a lar
13	30	Southern side of the derelict dam's wall	43	70	The head
14	30	In an isolated group of trees	44	70	The ston
15	30	The small spur	45	70	On a rui
16	30	The shallow gully	46	80	On a gho
<u>17</u>	<u>30</u>	<u>The fence bend</u>	47	80	At the f
21	40	The spur	48	80	Eastern
22	40	A triple-headed blackboy 4.5m tall	49	80	Head of
23	40	Between some boulders on a black-boy	50	80	<u>On a lef</u>
24	40	A small pit	51	90	At the f
25	40	South-West corner of the orchard	52	90	The shal
26	40	In the clearing	53	90	Beneath
27	40	200 metres @ 140 deg. from the eastern junct.	54	90	A pit 5m
<u>28</u>	<u>40</u>	<u>200 m @ 238 deg. from the northern track-</u> <u>bend</u>	55	90	<u>A creek</u>
			56	100	The foot
			57	100	South si
			<u>58</u>	<u>100</u>	<u>The gull</u>

51 - 10 24 - 37
33 - 22
~~45 - 27~~

<u>No</u>	<u>Points</u>	<u>Description</u>
31	50	The spur
x 32	50	The rocky spur
33	50	North-East side of a rock pile
34	50	The spur
<u>35</u>	<u>50</u>	<u>The gully</u>
36	60	A rock heap
37	60	The end of the rocky spur
38	60	South side of a thicket
39	60	West side of a clearing 25m X 10m
<u>40</u>	<u>60</u>	<u>250 metres @ 325 deg. from the gravel-pit</u>
41	70	The broad knoll
42	70	On a large fallen tree across a track
43	70	The head of the creek
44	70	The stony summit
<u>45</u>	<u>70</u>	<u>On a ruined fence</u>
46	80	On a ghost gum in a shallow gully
47	80	At the foot of a cliff
48	80	Eastern edge of a rock surface 25m X 10m
49	80	Head of the gully, below the boulders
<u>50</u>	<u>80</u>	<u>On a left-handed black-boy</u>
51	90	At the foot of a cliff
52	90	The shallow gully
53	90	Beneath two 10 metre boulders
act. 54	90	A pit 5m X 5m
<u>55</u>	<u>90</u>	<u>A creek junction</u>
56	100	The foot of upper large cliff
57	100	South side of a 3metre boulder
<u>58</u>	<u>100</u>	<u>The gully</u>